



## UNICO®

Single jet consumption meter  
for warm water up to 90 °C  
DN 15, 20

### Your benefits

- Robust, high grade wear resistant materials:  
Excellent measuring stability and reliability
- Measurement of low flow rates:  
Increased cost effectiveness

### Application

- Residential consumption monitoring of  
water consumption within an entire building
- Wall installation
- For nominal flow rates up to 4 m<sup>3</sup>/h

### Features

- Single jet dry-dial meter with magnetic coupling
- Register can be turned for best readout position
- Maximum operating pressure PN 16 bar
- Maximum operating temperature 90 °C
- Horizontal or vertical installation
- 5 dial resolution
- High grade wear resistant and corrosion proof materials
- Inlet strainer
- Reconditionable and recyclable execution
- **CE** Conformity according to European Measuring Instruments (MID)

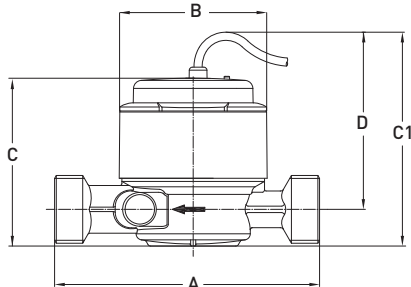
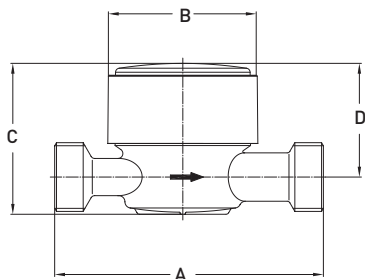
### Options

- Reed pulser IPG14 with 1,5 m or 3 m cable for the transmission to remote  
or centralised indication devices (Standard pulse value 10 liters)
- Other measuring ranges
- 1" NPSM connection thread on meter for 130 mm execution
- Other pulse values  
 Documentation: IPG14 – EPe40217

## Installation

Pipeline:	horizontal	—
	vertical	
Meter head:	upwards	↑
	sideways	← →

## Dimension Diagram



## Technical Data

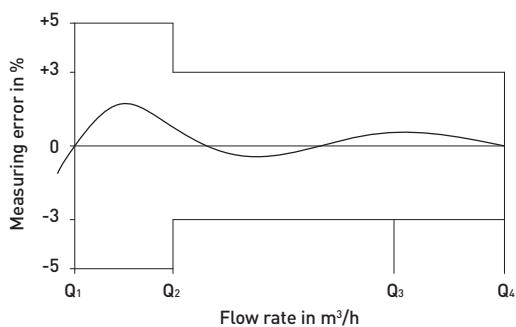
			15	20	20	20
Nominal diameter	DN	mm	15	20	20	20
Operating pressure	PN	bar	16	16	16	16
Connection thread on meter	G...B	Zoll	¾	1	1	1
Connection thread on coupling	R...	Zoll	½	¾	¾	¾
Nominal flow rate	Q <sub>3</sub>	m <sup>3</sup> /h	2,5	2,5	2,5	4
Maximum flow rate	Q <sub>4</sub>	m <sup>3</sup> /h	3,125	3,125	3,125	5
Partial limit horizontal ±3%	Q <sub>2h</sub>	l/h	50	50	50	80
Partial limit vertical ±3%	Q <sub>2v</sub>	l/h	100	100	100	160
Minimum flow rate horizontal ±5%	Q <sub>1h</sub>	l/h	31,3	31,3	31,3	50
Minimum flow rate vertical ±5%	Q <sub>1v</sub>	l/h	62,5	62,5	62,5	100
Temperature		max.°C	90	90	90	90
Measuring range horizontal			R80	R80	R80	R80
Measuring range horizontal			R40	R40	R40	R40

Dimensions and weights						
Length without couplings	A	mm	110	110	130	130
Length with couplings		mm	184	202	222	222
Width	B	mm	72	72	72	72
Height without Reed pulser	C	mm	72	72	72	72
Height with Reed pulser	C1	mm	108	108	108	108
Height from pipe centre	D	mm	90	90	90	90
Weight without couplings		app. g	610	640	700	700

Certifications				
UBA brass	x	x	x	x
KTW / W270	x	x	x	x
WRAS (Type: Unico2)	x	x	x	x
NSF-61-G (Type: Unico2)	-	-	x <sup>1)</sup>	x <sup>1)</sup>

<sup>1)</sup> only 1" NPSM execution

## Measuring error curve



## Typical Head Loss Curve

