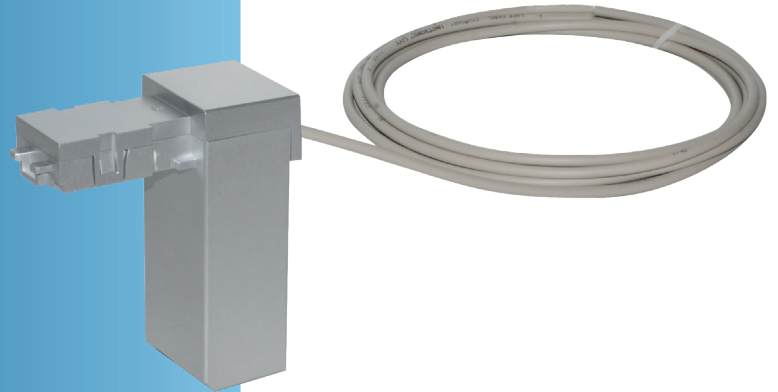




GWF4D technology®

# ECO E1 & E2 MODULE

SONICO®  
NFC-Communication module

## Your benefits

- > Serial End to End data communication:  
**Real time data communication from the meter to the Back-End system**
- > Detailed volume and flow rate information:  
**Cumulative, forward and reverse volume incl. information about actual flow rate in multiple units**
- > Temperature information:  
**Precise water and environmental temperature measurements**
- > Alarm status:  
**Detailed alarm status of the Sonico flow-meter**
- > High flexibility:  
**Multiple communication modules attached to the meter can operate simultaneously**
- > Water proof design:  
**Sealed housing (IP68)**
- > Plug & Play:  
**Easy and fast on-site installation with automatic NFC interface-detection**

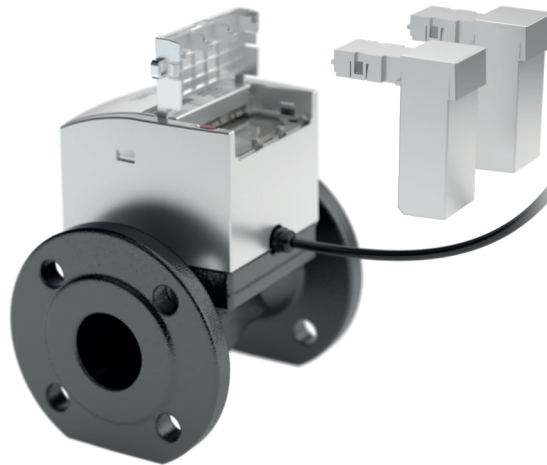
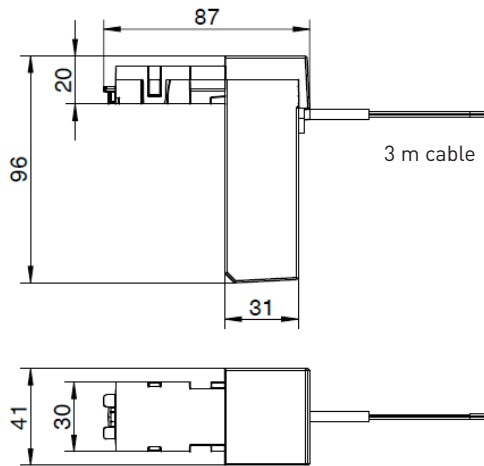
## Features

- > Compatible with sonico EDGE flowmeter
- > ECO E1 protocol with GWF Encoder based Sonico data
- > ECO E2 protocol with extended Sonico data
- > Simple installation and automatic start-up after connecting to meter
- > Snap-in NFC module slots – no connectors or cables needed
- > Continuous and tamper-proof connection, thoroughly reliable results
- > Can be factory fitted or retrofitted at installation site without breaking metrological seal
- > Battery powered module
- > **CE** Approval

## Applications

- > Industrial application
- > Building management system
- > Data logging in combination with various data loggers providing:
  - > NB-IoT (Multiple Bands)
  - > 4G (Fall back options)
- > Installation in harsh and flooded environment

## Dimensions (mm)



## Technical data

Specifications	
Approval	CE
Protection class	IP68
Protocol content E1 version	<ul style="list-style-type: none"> <li>&gt; Flow meter S/N</li> <li>&gt; Manufacturer ID</li> <li>&gt; Module status with Status information</li> <li>&gt; Cumulative volume</li> </ul>
Protocol content E2 version	<ul style="list-style-type: none"> <li>&gt; Flow meter S/N</li> <li>&gt; Manufacturer ID</li> <li>&gt; Module status with Status information</li> <li>&gt; Cumulative volume</li> <li>&gt; Flow rate and direction</li> <li>&gt; Forward volume</li> <li>&gt; Reverse volume</li> <li>&gt; Water temperature</li> <li>&gt; Environmental temperature</li> <li>&gt; Meter alarms</li> <li>&gt; Meter mode</li> <li>&gt; External power status</li> </ul>
Cable length/ supplied	3 m including cable joint for cable extension
Maximum cable length	30 m
Weight	Approx. 250 g

Power supply	
Battery	1 x Lithium Li/SOCL2 A size (not replaceable)
Typical battery lifetime	15 years (depending on environment) with 15 min read out cycles

Conditions	
Operational and storage temperature	-25 to +70 °C
Relative humidity	0 to 100 % (IP68)
ECO E1: Min. req. FW version Sonico EDGE	COM 1.XX
ECO E2: Min. req. FW version Sonico EDGE	COM 2.XX

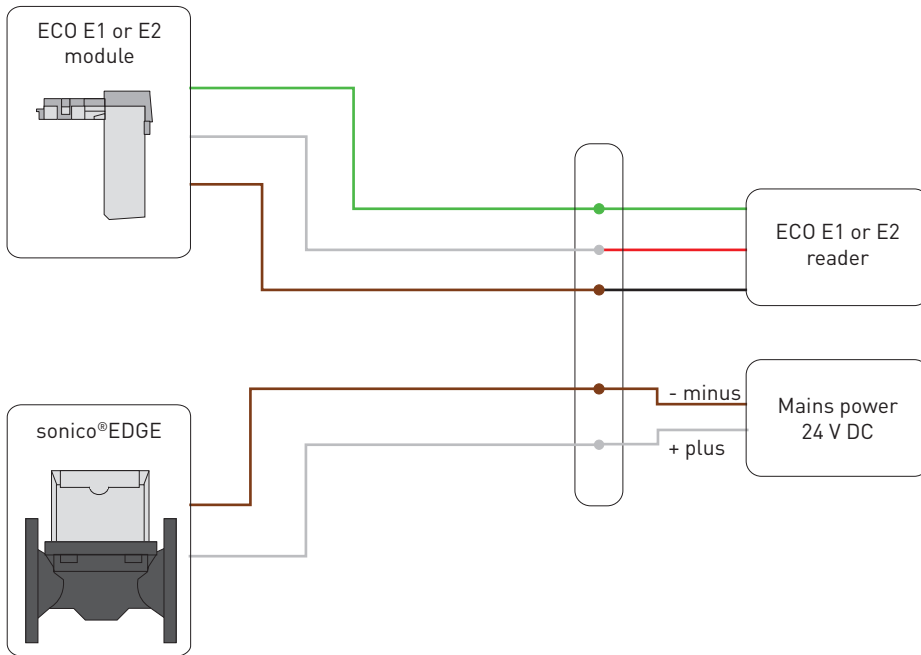
# OUTPUT + CONNECTION → ECO MODULE

## Example of data package

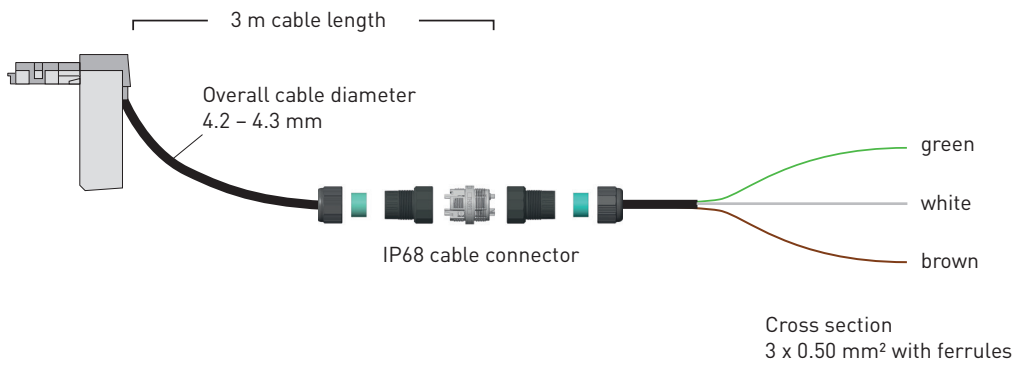
Information data package	Data Example	ECO E1	ECO E2
Flow meter S/N	12345678	x	x
Manufacturer ID	GWF	x	x
Firmware version	Vxy	x	x
Status information	> No error > Error > Module not attached > Module not responding > Wrong messages received	x x	x x x x
Cumulative volume	000000022222 L	x	x
Flow rate	20000 L/h		x
Forward volume	000000033333 L		x
Reverse volume	000000011111 L		x
Environmental temperature	21 °C		x
Water temperature	15 °C		x
Flow meter alarms	0		x
Flow meter status:	Meter mode: > Operation > Testbench Flow direction arrow: > No flow direction set > Arrow direction from right to left > Arrow direction from left to right External power: > Connected > Not connected		x

# OUTPUT + CONNECTION → ECO MODULE

## Electrical scheme



## Cable connection



# GWF

GWF MessSysteme AG  
Obergrundstrasse 119  
6005 Lucerne, Switzerland

T +41 41 319 50 50  
info@gwf.ch

Technical support  
T +41 41 319 52 00  
support@gwf.ch

→ [gwf.ch](https://www.gwf.ch)